

10.1inch HDMI Display-H

User Manual



In order to ensure your safe use of this product, please
read this manual carefully

V1.0

2020.09.10

【Safety Precautions】

◆ 1. Electricity and Safety

- Do not use a damaged power cord or plug, or a loose power socket
- Do not touch the power plug with wet hands
- Do not let any object compress or wrap the power cord
- Please Unplug the power cord when the device is unattended for a long time
- Insert the power plug all the way in so it is not loose

◆ 2. Installation and Safety

- Do not install the product near heat sources
- Do not set down the product on its front
- Do not install the product on an unstable or vibrating surface (insecure shelf, sloped surface, etc.)
- Do not place the monitor in any Damp area

◆ 3. Cleaning Products

Take the following steps when cleaning

- 1) Power off the product and computer
- 2) Disconnect the power cord from the product
 - Hold the power cable by the plug and do not touch the cable with wet hands.
 - Otherwise, an electric shock may result
- 3) Wipe the monitor with a clean, soft and dry cloth
 - Do not apply a cleaning agent that contains alcohol, solvent, or surfactant to the monitor
 - Do not spray water or detergent directly on the product
- 4) Wet a soft and dry cloth in water and wring thoroughly to clean the exterior of the product
- 5) Connect the power cord to the product when cleaning is finished
- 6) Power on the product and computer

【Package Contents】



**10.1-inch Touchscreen
Monitor x 1**



Stereo speakers x 2
For Audio external playback



HDMI Cable x 1
For Connecting the computer



MicroUSB Cable x 1
For Power (5V/2A)



**HDMI to HDMI
Adapter x 1**
For Connecting the Pi 3



**MicroHDMI to
HDMI Adapter x 1**
For Connecting the Pi 4



**MicroUSB to USB
Adapter x 1**
For Connecting the Pi 3



**MicroUSB to USB
Adapter x 1**
For Connecting the Pi 4



**Copper Posts and
Screws(M2.5) x 4**
For Installing Raspberry Pi



**Cross Screwdriver
(small) x 1**
For Installing Raspberry Pi



Acrylic Stand x 2

For Standing the
Monitor



Antiskid Shims x 4

For Stand Antiskid



Stand Installed Screws x 2

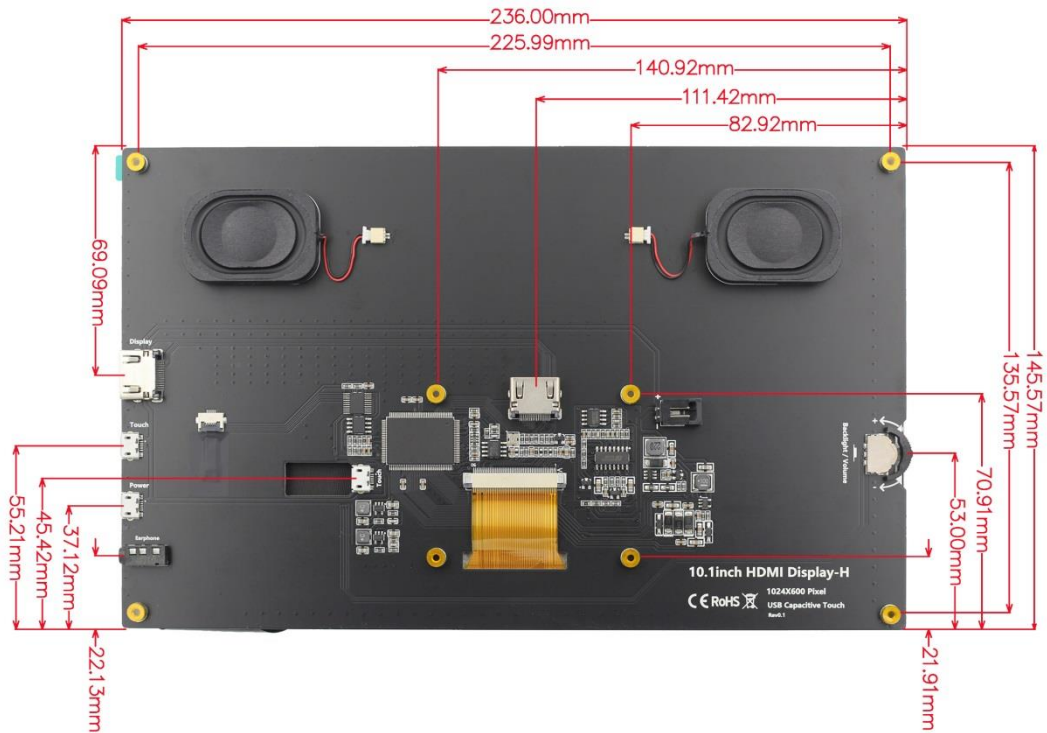
For Installing Stand

【Product Description】

◆ 1. Product Features

- ✧ The 10.1-inch IPS full view display has large visual angle, real color and excellent image quality
- ✧ The resolution is 1024x600, and the display screen is exquisite
- ✧ Toughened glass touch panel, hardness up to 6h, durable and scratch resistant
- ✧ Capacitive touch screen, up to support 5 touch points
- ✧ The HDMI HD input interface can be used for HDMI display
- ✧ Self-contained stereo dual speaker for external audio playback
- ✧ External 3.5mm headphone output port, supporting audio output
- ✧ independent dial switch, support backlight brightness and volume dual adjustment
- ✧ Those supporting mainstream development boards such as raspberry pie, banana PI and BB black
- ✧ For raspberry pie display, support raspbian, Ubuntu, Kali, win10 IOT and other systems, touch free drive
- ✧ It can be used as computer monitor, support win7 / win8 / win10 system, and touch free
- ✧ Those used as game console display, supporting PS4, XBOX360, switch, etc
- ✧ The product has passed CE and ROHS certification

◆ 2. Product Size

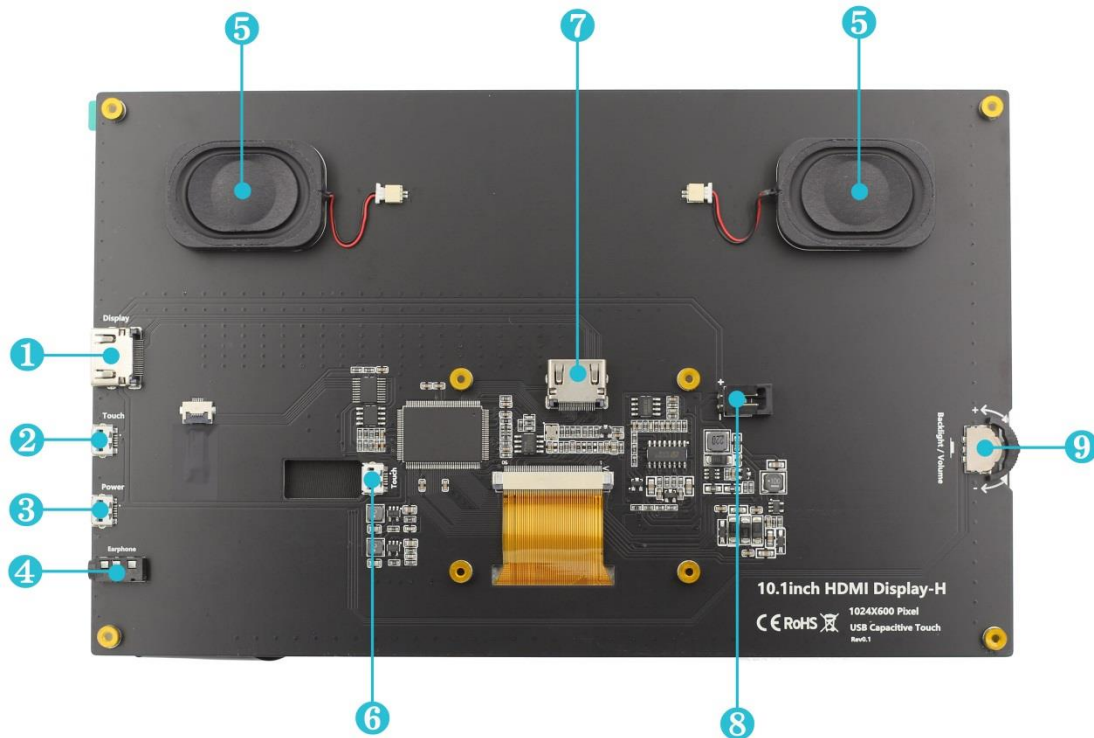


◆ 3. Product Parameters

SKU	MPI1001
Screen Type	IPS screen
Screen Size	10.1 inch
Resolution	1024 x 600
backlight adjustment	Switching and adjusting of dial switch
Volume adjustment	Switching and adjusting of dial switch
Touch Screen Type	Capacitive Touch Screen
Touch IC	GT9271
Power	MicroUSB (5V)
Speakers Power	8Ω 2W
Video Input Interface	HDMI

Audio Output Interface	3.5mm Audio Interface and Stereo speakers
Module Size (L x W x H)	236.00 × 145.57 × (20.00±0.2)mm
Product weight (including package)	900g

◆ 4. Product Interface and Key Description

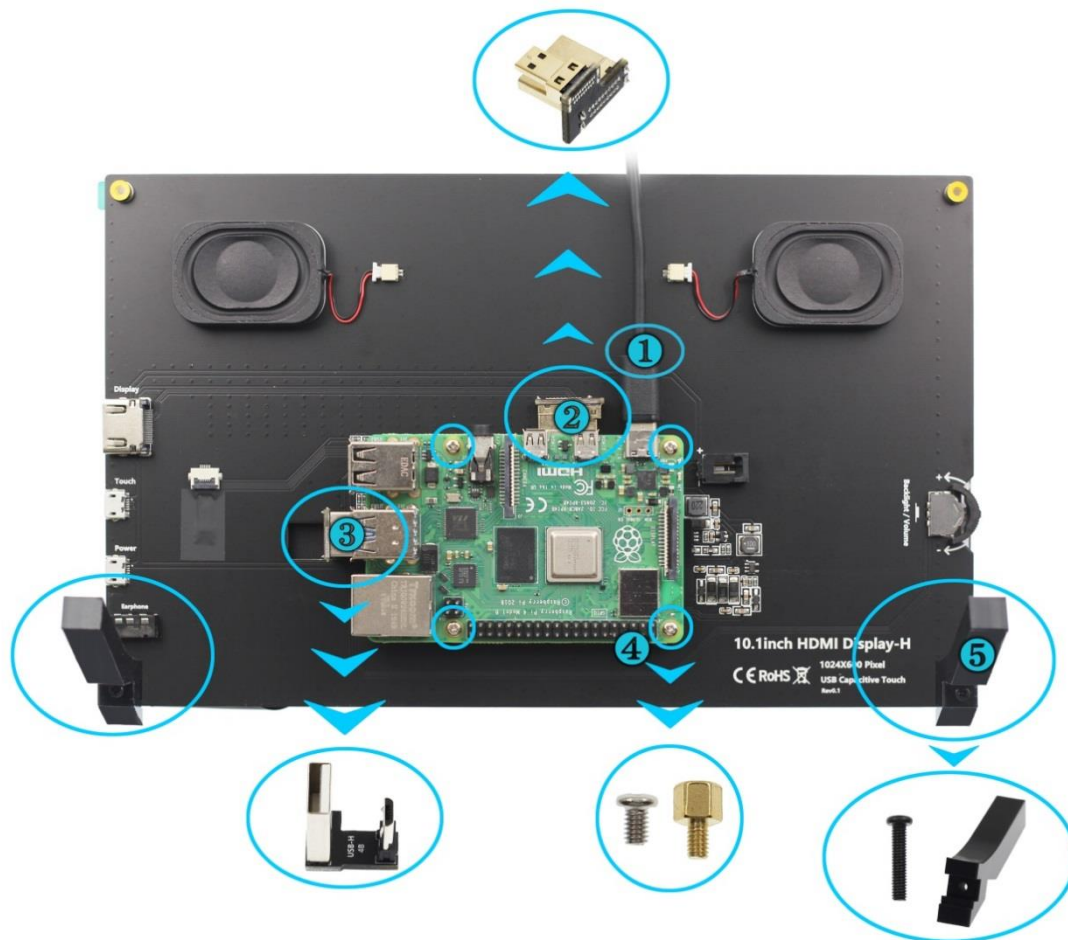


- ❶ **HDMI Interface:** connect to the source device using an HDMI cable. It is often used to connect to a computer, The maximum supported resolution is 1920x1080.
- ❷ **Touch Interface(MicroUSB):** Connect to the source device using a microusb cable. It is used for touch and power supply, and is often used to connect computers.
- ❸ **Power Interface(MicroUSB):** Use microusb cable and power connection. This interface is only used for power supply.
- ❹ **3.5mm audio interface:** connect audio output devices, such as headphones.
- ❺ **Stereo speakers:** connected by slots and modules. For Audio external playback.
- ❻ **Touch Interface(MicroUSB):** Connect to the source device using a microusb cable. It is used for touch and power supply, and is often used to connect Raspberry Pi.
- ❼ **HDMI Interface:** connect to the source device using an HDMI cable. It is only used to connect to a Raspberry Pi, The maximum resolution is 1024x600.
- ❽ **Fan interface:** used to connect the cooling fan.

- ⑨ **Wheel switch:** Used to adjust screen backlight brightness and volume. By default, in the volume adjustment state, up and down to adjust the volume + and -. Press the switch to switch to the backlight brightness adjustment state, up and down to adjust the backlight brightness increase and decrease respectively. The volume and backlight brightness adjustment state is switched by pressing the switch.

【Connect to Raspberry Pi】

◆ 1. Connect to Raspberry Pi 4



- ① 5V/3A power adapter(Type C)
- ② MicroHDMI to HDMI Adapter
- ③ MicroUSB to USB Adapter(For the Raspberry Pi 4)
- ④ Copper posts and screws (M2.5)(first copper posts, then raspberry pie, finally screws)
- ⑤ Module support (after placing the support, screw with the support, the bottom of the anti-slip gasket)

◆ **2. Connect to Raspberry Pi3**



- ❶ 5V/2A power adapter(Micro USB)
- ❷ HDMI to HDMI Adapter
- ❸ MicroUSB to USB Adapter(For the Raspberry Pi 3)
- ❹ Copper posts and screws (M2.5)(first copper posts, then raspberry pie, finally screws)
- ❺ Module support (after placing the support, screw with the support, the bottom of the anti-slip gasket)

Note: Please connect the cables first then power the Raspberry Pi. And use the full 2A for power supply with Raspberry Pi 3B+, 3B, 2B, B+, B+, A, fully 3A for Raspberry Pi 4B. If the volume is set up, please connect the POWER interface power supply when playing audio with the external loudspeaker, otherwise, the power supply will cause the crash.

【Connect to PC/Laptop】



- ❶ HDMI Cable
- ❷ Micro USB to USB A cable(for touch and power supply)

【Use Raspbian /Ubuntu Mate /RetroPie/Kali System】

◆ 1. Download the latest Official Image

- 1) Download Raspbian latest Official Image

Download URL: <https://www.raspberrypi.org/downloads/raspbian/>

Username: pi Password: raspberry

- 2) Download Ubuntu Mate latest Official Image

Download URL: <https://ubuntu-mate.org/download/>

The user name and password can be set by yourself after startup

- 3) Download Kail latest Official Image

Download URL: <https://www.offensive-security.com/kali-linux-arm-images/>

Username: kali(The old version is root) Password: kali(The old version is toor)

- 4) Download RetroPie latest Official Image

Download URL: <https://retroPie.org.uk/download/>

Username: pi Password: raspberry

◆ 2. Brun Official Image

- 1) Download and install tool software (If they are already installed, this step can be ignored)

SD card format software SDCard Formatter download URL :

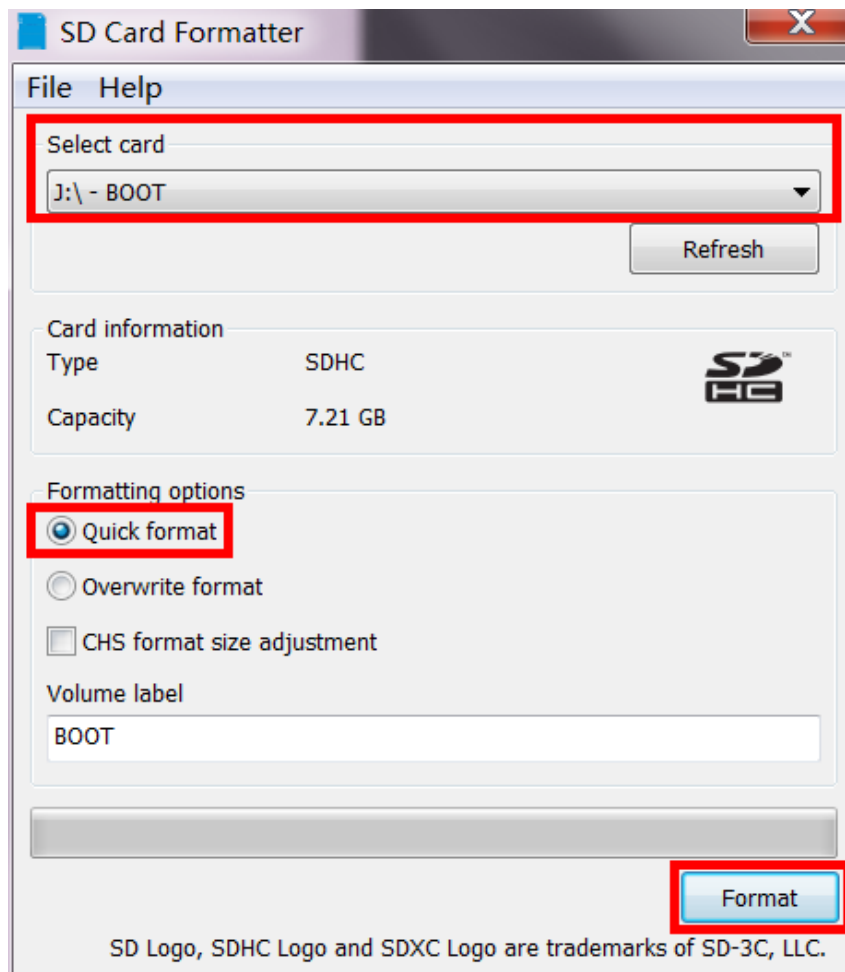
https://www.sdcard.org/downloads/formatter_4/

Image burning software win32diskimager download URL:

<https://sourceforge.net/projects/win32diskimager/>

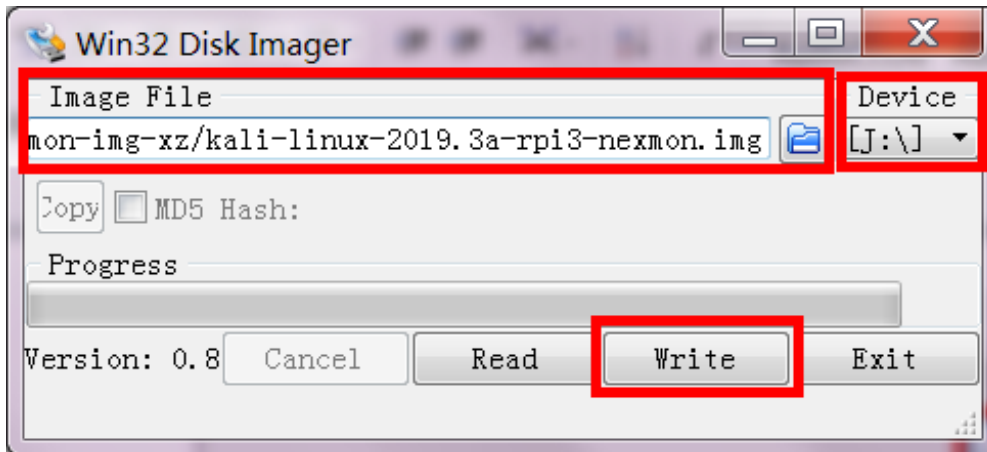
- 2) Format SD card

Insert the SD card into the card reader -> Insert the card reader into the computer -> Open the SDCard Formatter software -> Select SD card -> Select quick format (generally select quick format, other options can be selected according to your own needs) -> Click the Format button -> Select "Yes" -> Click OK after formatting.



● 3) Brun Image

Open the win32diskimager software -> Select the image file to be burned (xxx.img) -> Select SD card -> Click the "write" button -> Select "Yes" -> Wait for the burning to complete (the whole process lasts about 10 minutes)



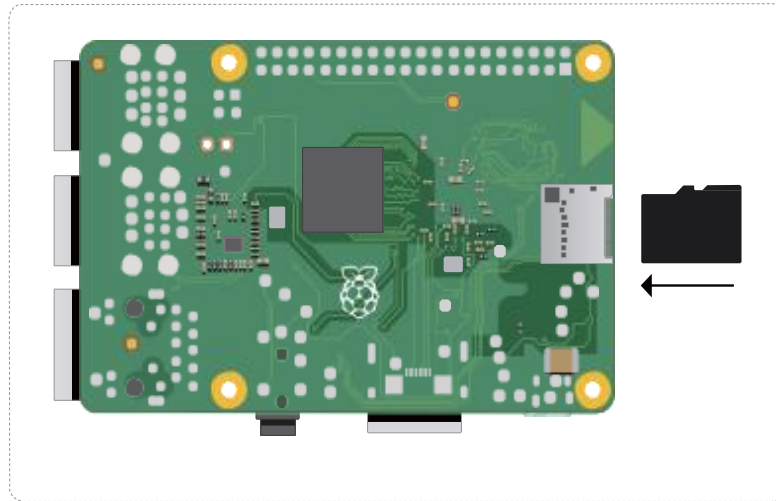
◆ 3. Modify the "config.txt" configuration file

Open the "config.txt" file in the root directory of SD card on the computer, Add the following at the end of the file, save and exit.

```
hdmi_force_edid_audio=1
max_usb_current=1
hdmi_force_hotplug=1
config_hdmi_boost=7
hdmi_group=2
hdmi_mode=87
hdmi_drive=2
display_rotate=0
hdmi_timings=1024 1 150 18 150 600 1 15 3 15 0 0 0 60 0 60000000 3
```

◆ 4. Insert SD card

After the above steps are completed, pop up the SD card on the computer and insert it into the SD card slot on the back of the raspberry pie.



◆ 5. Running system

After connecting the Raspberry Pi and the display module, power on the raspberry pie. You can see that the display screen has screen output and can be touched normally.

